

KEITHCOT FARM PRIMARY SCHOOL NEWSLETTER

LINKING LEARNING
TO LIFE

ISSUE 20

WEEK 8 TERM 2 2020

The Golden Way Partnership

Address: Keithcot Farm Drive
Wynn Vale SA 5127

Phone: 8289 1133
Fax: 8289 1554

Email: dl.1847_info@schools.sa.edu.au
Website: www.keithcotps.sa.edu.au

FROM THE PRINCIPAL

Pandemic Positives

The pandemic forced so much in our school to stop that now is a fantastic opportunity to improve our effectiveness and properly evaluate initiatives before they are turned back on.

Extra-curricular activities have largely stopped so students are in class more regularly and, when the pandemic hit, it seemed like everything was turned off — many of the initiatives, programs and requirements that school leaders and teachers normally have to attend to were suddenly cancelled.

Early feedback from school leaders and teachers is that they are enjoying being able to focus more on their core work of teaching and learning. Teachers have noticed students developing more independence and responsibility as they have not had their parents in the classroom organising their equipment for them.

One thing that will be welcomed back in Term 3 is our volunteers! We have really missed all that you contribute to our school, in so many ways.

We have really missed our community connection and I am aware of parents who have missed that also.

However we are still guided by the advice of SA Health and our department and need to take baby steps back to the initiatives that are valued.

Last newsletter I commended the efforts of our teachers. This newsletter I would like to recognise our amazing community. So many of our parents have strictly adhered to the guidelines around safe distancing, not coming into the school ground early and congregating outside. Many have ensured that their children who are unwell have remained at home. I would like to say how much I appreciate your support of our students and teachers. You have accepted all of the changes which have had to be enforced.

All of this needs to be recognised and, at some point — when the health risks are lower — we should celebrate what has been achieved. The pandemic has brought many problems, but there is enormous effort and goodwill in our school community that will ensure a positive future.

Carol Farnworth

RESILIENCE EFFORT SAFETY PERSISTENCE EMPATHY CREATIVITY TEAMWORK

H2A



House 2A is having a fun Japanese lesson.



Here we are matching the Japanese characters on the Smart TV with the objects.



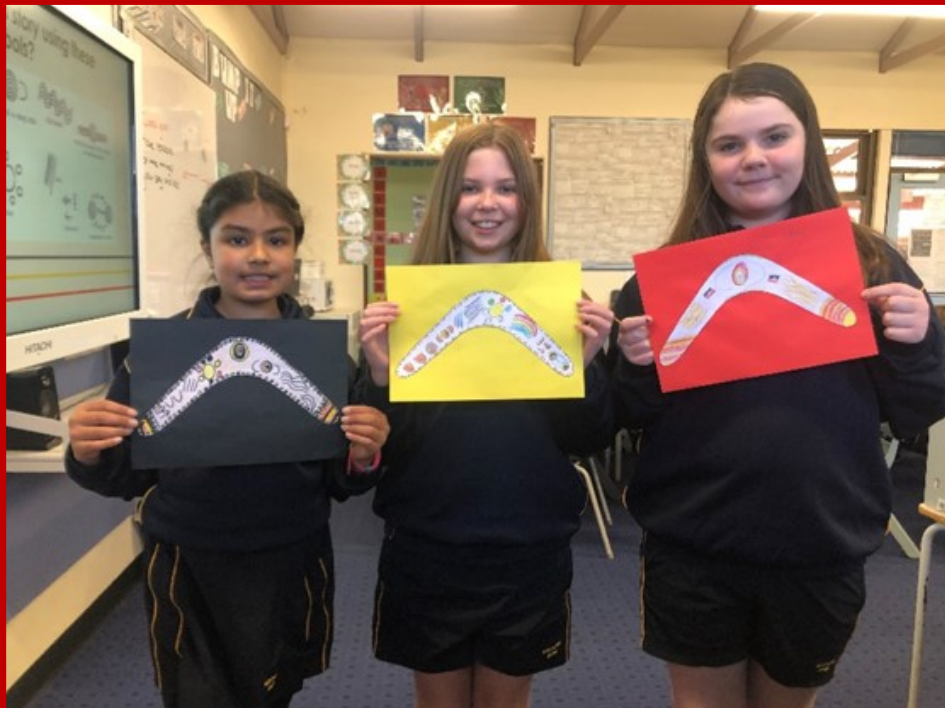
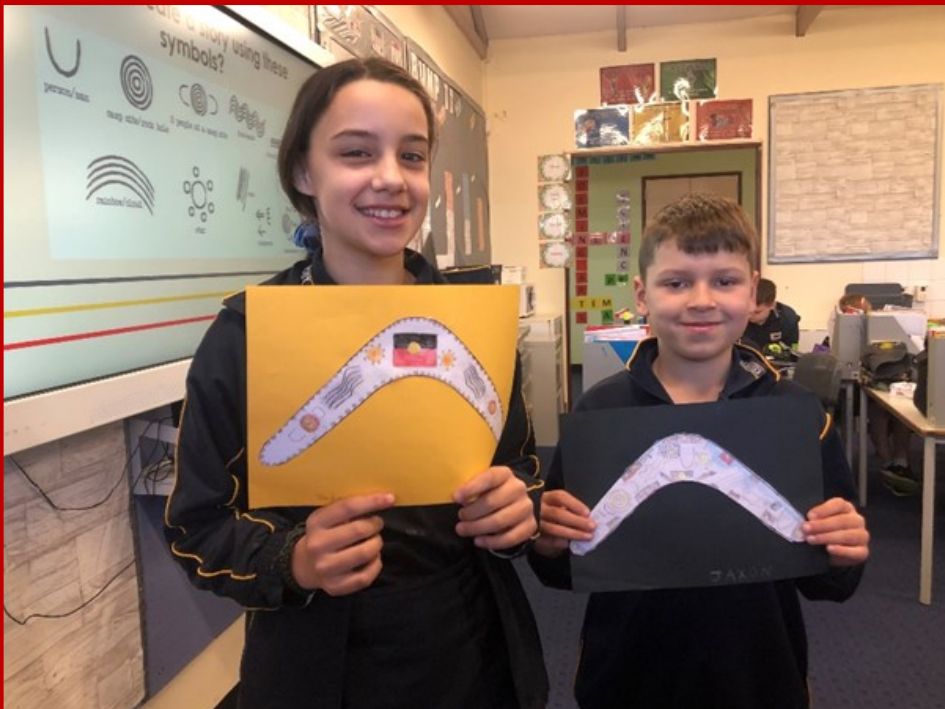
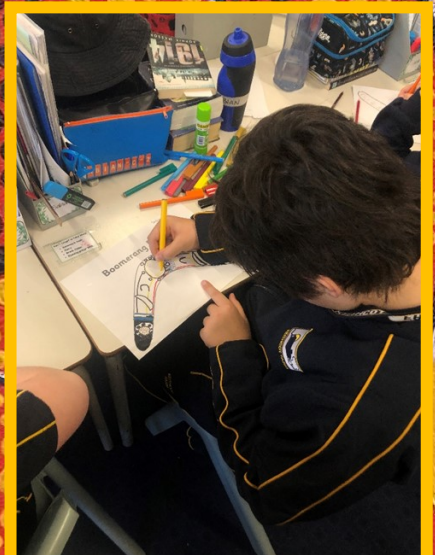
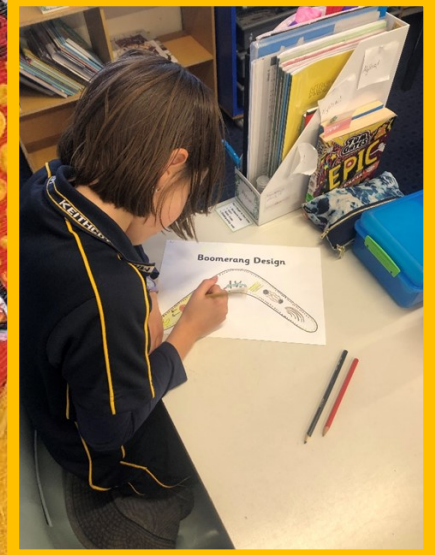
We have to read the characters then choose the characters from the table.



P1C

Pod 1C honouring National Reconciliation Week!

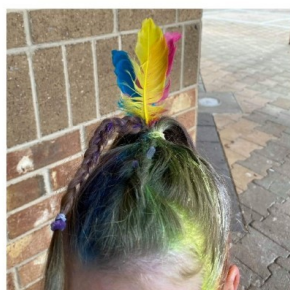
In Week 6, students looked at the meaning of different Aboriginal culture symbols and samples of Aboriginal art in recognition of Reconciliation week. Students thoroughly enjoyed the next task of creating their own boomerangs that tell an Aboriginal story through the symbols they had learnt. It was great to see students engaged and excited to learn about culture while showing great respect. Have a look at some of our designs!



LOCKS AND SOCKS DAY

This week we held our Locks and Socks day. We had so many students take part and saw some amazing, colourful creations. Our parents and caregivers proudly posted photos of their children on the school facebook page. Locks and Socks day is well supported each year and always lots of fun.

Take a look at some of the photos shared.



Year 7 Transition to High School Update

As you know, year 7 is moving to high school in 2022. This means that if your child is in year 5 or 6 this year, they will graduate from primary school next year.

Having two year levels graduate at the same time is a unique situation and we want to assure you that our students will experience a positive and successful transition from primary to high school.

To ensure the experience is memorable, we are considering how leadership opportunities, senior's jumpers, graduation ceremonies and participation in activities that were historically 'year 7' events will include year 6 students.

The senior's jumpers will have different designs which will be selected by the Year 6's and the Year 7's. Graduation ceremonies will also be separate events.

In 2021 we will also plan how the Year 5 students develop leadership skills to prepare them for being our school's senior students in 2022.

We will continue to keep you updated.

Keeping connected to online support : Provided by Behaviour coach Cyril Chetty.

Children and young people grow up in a highly connected world. Online connections are integral to how they live. As parents and carers, it's important to help your child manage how and when they are online.

While at times it may be necessary to limit their access, it's important to remember that their online connections can be healthy and link them to supportive friends on social media or to mental health information and services.

Children and young people need to know it's ok to reach out to mental health professionals when they need advice and support.

We want all children and young people to feel respected, in touch and mentally healthy. We can guide them through complicated relationships, no matter where they happen. Let's work together to help them stay safe and keep connected. esafety resources found at <https://www.esafety.gov.au/parents> provide useful information and advice for parents and carers to help children have safe experiences online.

Mental health resources :

<https://kidshelpline.com.au/>

<https://headspace.org.au/eheadspace/>

Our wonderful OSHC staff have been busy completing more projects around the school. Some of them have been gardening, some have been painting and others have been working on a special project that has us all very excited. We cannot wait to reveal the completed BIG/ LITTLE project soon. Thank you to our OSHC staff for all the great work.



KEITHCOT FARM PRIMARY SCHOOL

proudly supports National Blood Donor Week
14–20 June 2020

Thanks X
1.5 million

for all the blood donations

www.lifeblood.com.au

Join our Lifeblood Team

 give blood


Australian Red Cross
Lifeblood

Nationally Consistent Collection of Data on School Students with Disability (NCCD)

All schools are required to collect information about the numbers of students that they provide adjustments to under the Disability Discrimination Act (1992) and Disability Standards of Education. This data is used as the basis for national funding. The NCCD involves the collection of;

- the number of students receiving adjustments to enable them to participate in education on the same basis as other students.
- the level of adjustment provided to students.
- student's type of disability if known.

Under the model the definition of disability is broad and includes learning difficulties, health and mental health conditions. If your child is identified for inclusion in the Collection, the required information will be included in this year's data collection.

If you have any questions about the data collection, please contact Mrs Kym Dinedios - Assistant Principal on 8289 1133.

Further information can be found at: <http://www.education.gov.au/nationally-consistent-collection-data-school-students-disability>.



Could \$500 help you with school costs?

Join Saver Plus and we'll match your savings, dollar for dollar, up to \$500 for school costs.

- laptops & tablets
- lessons & activities
- uniforms & shoes
- books & supplies
- sports fees & gear
- campes & excursions

To join Saver Plus, you must have a Centrelink Health Care or Pensioner Concession Card, be at least 18 years old, have some regular income from work (you or your partner), and have a child at school or attend vocational education yourself.



Contact
Stacey Hall
your local Saver Plus
Coordinator
Phone
0417 048 689
Email
Stacey.Hall@thesmithfamily.com.au
Web
www.saverplus.org.au



Saver Plus is an initiative of the Brotherhood of St Laurence and ANZ, delivered in partnership with Berry Street, The Benevolent Society and The Smith Family and other local community agencies. The program is funded by ANZ and the Australian Government Department of Social Services. Go to www.saverplus.org.au for more information.



<https://cuaustralasia.com/>

Just a reminder.
If your child is unwell please do not send them to school.
It is in the best interest of your child, other students and staff, for them to stay home and recover.



Is our student wellbeing service.

To access the service or for more information please contact Kym Dinedios on 8289 1133 or contact Simon at simonh@growwellbeing.com.au

medicare



DAILY TIME TABLE

HOME ROOM	8.55 - 9.00
LESSON 1	9.00 - 9.50
LESSON 2	9.50 - 10.40
RECESS	10.40 - 11.00
LESSON 3	11.00 - 11.50
LESSON 4	11.50 - 12.40
LUNCH EATING	12.40 - 12.50
LESSON 5	12.50 - 1.40
LUNCH PLAY	1.40 - 2.10
LESSON 6	2.10 - 3.00
HOME ROOM	3.00 - 3.05



Find us on
Facebook

KEITHCOT FARM PS COMMUNITY PAGE

A closed group for parents to communicate and connect with the school & other parents / caregivers. Stay up to date with news, events and information for the whole school.

KEITHCOT FARM PRIMARY SCHOOL 2ND HAND UNIFORM 2ND HAND BUY AND SELL GROUP

This is a public group for all posts regarding 2nd hand uniform only.

KEITHCOT FARM PS SPECIAL NEEDS SUPPORT GROUP

This closed group is a support page for parents and caregivers of KFPS Special Needs Students.

IMPORTANT DATES

TERM 2

Last Day of Term

Friday 3rd July

(Early Dismissal of 2.05pm)

CORRECT AT TIME OF PUBLICATION

PUPIL FREE DAYS & SCHOOL CLOSURE DAYS FOR 2020

4th September - SCD

7th September - PFD

30th October - PFD

**** UNIFORM SHOP ****

8.15am - 10.00am

Tuesdays and Thursdays

RESTRICTIONS STILL IN PLACE

ASSEMBLIES / COFFEE N CHAT

SCHOOL BANKING

SCHOOL VOLUNTEERING

SAPSASA EVENTS

COLOUR EXPLOSION FUN RUN

CAMPS / EXCURSIONS

PARENTS IN CLASSROOM / ON SITE

WAKAKIRRI - CANCELLED

THANK YOU FOR YOUR SUPPORT AND

UNDERSTANDING WE WILL KEEP YOU

UPDATED WITH ANY FURTHER CHANGES

VIA EMAIL AND FACEBOOK

CORRECT AT TIME OF PUBLICATION